

RANDOLPH COUNTY CONSERVATION DISTRICT

http://arkansaswater.org/index.php?option=com_content&task=view&id=356

ELEVEN POINT WATERSHED COST SHARE PROJECT

ANRC, EPA, RCCD, NRCS

The Problem:

- **Listed on 303(d) list**
- **Organic enrichment causing depleted oxygen levels.**
- **Not sustaining the designated use for aquatic life because of low dissolved oxygen.**
- **Agriculture activities within the watershed are thought to be the major source of nutrient runoff in the watershed.**

Eleven Point River Watershed

2006 Land Use

Arkansaswater.org

- Forest: 61.7%
- Grassland: 33.4%
- Transitional: 4.0%
- Water: 0.6%
- Cropland: 0.5%
- Suburban: 0.2%
- Urban: 0.1%



Eleven Point River 319(h) Project

Project Management:

Randolph County Conservation District

Project Cost: Total (\$328,460)

Federal (\$169,500) State/Local(\$158,960)

\$75,000 federal dollars made available to
landowners for up to 40% cost share

Eleven Point River 319(h) Project

- Goal: Improve water quality and land productivity in an effort to remove this stream from ADEQ's 303(d) list.
- Objective: Write 132 Conservation plans and provide cost-share on approved conservation practices.

Eleven Point River 319(h) Project

Project Tasks

1. Utilize Conservation District Board
2. Provide Technical Assistance
3. Provide Cost Share for BMP Implementation
4. Technology Transfer
5. Equipment Purchase
6. Reporting

Task 1

Steering Committee Responsibilities

- R.C.C.D. will meet monthly for 3 years
- Review all inventories and assessments done in the Watershed; set priorities for cost-share in the project area; and coordinate all activities of the project components
- Review and approve all deliverables

Task 2

Technical Assistance

- The District Technician will write 132 conservation plans over a 2 year period.
- R.C.C.D. will make return visits as needed to the 134 farms planned to assist with conservation planning and BMP implementation.

Task 3

Cost Share 40%:

Based on 2009 EQIP Cost List

Task 3 (cont.)

- Pond
- Fence
- Watering Facility
- Pipeline
- Heavy Use Area
- Pasture And Hay Planting
- Brush Management
- Pest Management
- Waste Storage Facility

Task 4

Technology Transfer:

- Develop and publish a quarterly newsletter (12 Completed)
- Distribute the newsletter to landowners who own 15 acres or more within the Eleven Point Watershed
- Held two outreach meetings to inform landowners within the Eleven Point Watershed

September 2010
Volume 3, Issue 3

Randolph County Conservation District

Eleven Point River Watershed

Improvement Project

Implemented by RCCD

Cost Share for Conservation Practices

Objective: To improve land uses in the Eleven Point Watershed in Randolph County and to implement conservation plans on pasture and hay land along the Eleven Point River.

The goal of the project is to get the Eleven Point River removed from the list of impaired water bodies. To do this the RCCD has obtained a 319(h) grant from the EPA, administered by the ANRC, to help with conservation practices along this river.

Introduction

The Eleven Point River, a tributary of the Black River, drains about 184 square miles in northeastern Arkansas. The thirty three mile stretch of the Eleven Point River that lies exclusively in western Randolph County is an outdoor enthusiast dream. This stretch of the river provides excellent canoeing, boating, and swimming opportunities for many Arkansans.

Problem

The latest Integrated Water Quality Monitoring and Assessment Report 305(b) (2006) published by the Arkan-

sas Department of Environmental Quality lists the entire 33.1 miles of the Eleven Point River as inadequately supporting aquatic life because of low dissolved oxygen levels.

This placed the river on the Arkansas Department of Environmental Quality 303(d) list as an impaired water body.

Thirty-three percent of this watershed is used for pasture or hay land, while sixty-one percent is forest. Best Management Practices (BMPs) should be implemented in this watershed in order to prevent excessive enrichment from animal waste and silt from entering the stream.



Conservation District

Task 5

Equipment Purchase

- Purchased Fence Dawg fencing tool
- Held Field Day to show producers how this equipment works



Fence Dawg Field Day



Task 6

Reporting:

- Provide quarterly reports that include implementation documentation
 - (11 Quarterly Reports Completed)
- Provide Annual Reports
 - (2 Annual Report Completed)
- Complete Final Report

Eleven Point River 319(h) Project

Accomplishments to date:

- Held monthly Conservation District Board Meetings
- Published 12 Newsletters
- Completed 134 conservation plans
(on about 15,872 acres)
- Purchased Fence Dawg Fencing Equipment
- Held Fence Dawg Field Day Demonstration
- \$63,769.55 has been paid to landowners
(\$121,028.53 landowner match)

Best Management Practices:

Ponds:

- 7 Completed

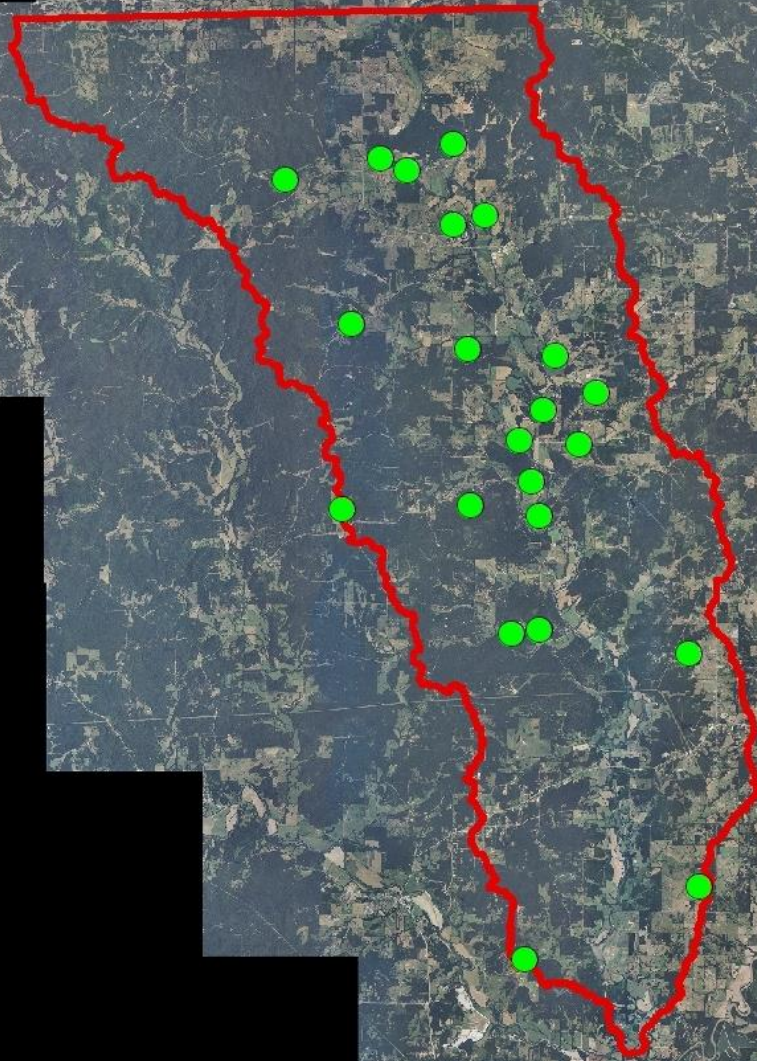
Critical Area Planting:

- 3.5 acres completed

Pipeline:

- 2,785 ft. installed

Map of Eleven
Point River
Watershed
Completed
Practices



Waste Storage Facilities

- 2 Completed



Pasture and Hay Planting

- 359.4 acres completed





Fence

- 57,955 ft. completed







Watering Facilities

- 11 Completed







Heavy Use Areas

Over 7,895 square ft. Installed







Pest & Brush Management

- 349 acres of Pest Management completed
- 203.3 acres of Brush Management completed





Ponds 7 (13,742.57 cy)







R.C.C.D. Equipment Haybuster 107 No-till Drill



R.C.C.D. Equipment 300 gallon Trailer Sprayer



R.C.C.D. Equipment Bermuda Sprigger



R.C.C.D. Equipment

Roto Wiper & Vicon Seeder









Thank You...

